



October LMI Page

Latest Vacancies

Lowestoft

Passenger Assistant – 51 Taxi's, Lowestoft. Experienced passenger assistant badge preferable. **Contact Stacey.lock@51taxis.co.uk**

Assembly Operative – Hales Group, Lowestoft. Temp (approx. 5 months), 7.30am-4.15pm Mon - Thur, 7.30am-12.30pm Fri. Good level of hand eye co-ordination and dexterity with intricate tasks. **Full details and apply via [Hales Jobs website](#)**

Food Production Operative – GI Group, Lowestoft, starting rate £11.87ph, hours vary but typically between 30 and 40 hours PW. Mix of the following shifts, 06:00 - 14:00, 14:00 - 22:00, 22:00 - 06:00. **Full details and apply via [GI Group website](#)**

Maintenance Operative - High Street Surgery, Lowestoft, bank. DBS required. Experience, and full clean driving licence required. **Full details and apply via [NHS Jobs website](#)**

Recycling Operative - Axil Integrated Services, Lowestoft, £28,000 P/Y, Permanent, 32 – 40 hours P/W inc. weekends. FLT licence and towing experience beneficial, very hands on supporting with waste segregation. **Full details and apply via [Indeed](#)**

Labourer - Blu Tech consulting, Lowestoft, £14.2/hour, 55-75 hours a week. Valid CSCS card is essential, Must have Previous labouring experience. **Full details and apply via [CV Library](#)**

Labourer - Construction Recruitment Services, Great Yarmouth, £13/hour. Must be Familiar with power tools. **Full details and apply via [CV Library ref 222290777](#)**

Gardener/ Landscaper – Compass Gardens EA Ltd, Beccles. Full time. 21+, full clean driving licence required. Experience preferred but not essential, full training available. **Email CV to rob@compassgardens.ltd**

Laundry Operative – East Point Laundry Services, Southwold based, near a bus stop/ on site parking, part time. Full training and support. **Email eplaundryservices@gmail.com**

Barista – Costa, North Quay Retail Park. Starting pay of £12-13 PH. 10 hours PW, seasonal. Training available. **Full details and apply via [Costa website](#)**

Bar staff – Lady of the Lake, Lowestoft. 18+, experience and flexibility required. **Email CV to manager@theladyofthelakeob.co.uk**

Bar staff – Flying Dutchman, Lowestoft. Initially 2-3 shifts per week. **Full details advertised on company Facebook page direct message or, email CV to flyingdutchmanpub@gmail.com**

Housekeeper - The Wherry Hotel, Lowestoft, part time. Day-to-day cleaning tasks of the venue, ensuring standards of procedures are met. Possessing good levels of cleanliness, with a high attention to detail is essential. **Full details and apply via Indeed**

Hotel Night Porter & Receptionist - The Hatfield Hotel, Lowestoft, From £11.44 an hour, Part-time. Shift patterns TBC depending on business needs and the successful applicant. Motivated when working alone and happy to work 9pm to 7am. **Full details and apply via Indeed**

Night Reception Team Member – Travelodge, Lowestoft, £11.44 - £12.58 P/H, Part-time. No experience required for this role, coaching provided. **Full details and apply via Indeed**

Front of House - Premier Inn, Lowestoft, 12 hours P/W, up to £11.49 P/H. Immediate start, no experience needed. **Full details and apply via Indeed**

Sales Assistant – Ryman, Lowestoft, £8.82 - £11.50 P/H, Part-time. 14 hours P/W. **Full details and apply via Indeed**

Retail Sales Assistant - McColl's Retail Group, Lowestoft, £11.44 P/H, 20 hours P/W. Enjoy building relationships with customers and colleagues. **Full details and apply via Find a Job ref DA_1486_SA**

Retail associate - TK Maxx, Lowestoft, Various hours available, Mon – Sun. **Full details and apply via Indeed**

Tesco Colleague - Lowestoft Leisure Way Superstore, 16 hours P/W. Competitive salary. **Full details and apply via company website**

Store Assistant – Aldi, Tower Road Lowestoft, £12.40 - £13.35 P/H. Permanent. **Full details and apply via company website**

Store Management Apprentice – Aldi, Tower Road Lowestoft, £8.44 - £11.83 P/H. 3 year programme. Requires GCSEs in Maths and English, grade 4 and above (minimum grade C or equivalent). **Full details and apply via company website**

Part Time Branch Assistant - Booker Group, Lowestoft, 16 Hours Up to 4 days any day out of 7 including Weekends. Ideally experience within the Wholesale or Retail environment. **Full details and apply via Find a Job ref 23177**

Activities Assistant – Barchester Healthcare, Oulton Broad. £11.84/hour. No experience required, have a sense of fun, creativity, and the ability to encourage and motivate others. **Full details and apply via CV Library ref 222212544**

Personal Assistant – Avail Care, Hopton, 5 hours per day. Experience is not required for this role. You do not need any qualifications or training to apply. We provide full, free training. Social outings to the beach, walks and general support. **Full details and apply via CV Library**

Relief Care Assistant - Orwell Housing Association Ltd, Kessingland. £11.55 PH, Permanent, 0 hours contract (various hours and shifts available). **Full details and apply via Indeed**

Customer Service Advisor – Hales Group, Lowestoft, Mon - Fri between 8am and 7pm, Saturdays 8am-1pm on a rota basis. 23k+DOE. **Full details and apply via Hales Jobs website**

Sponsorship and Sales Executive – Lowestoft Town FC, commission-based salary. Experience in advertising and sponsorship sales. **Email CV to finance@lowestofttownfc.co.uk**

Administrator – Hales Group, Lowestoft, £13.73 per hour, Mon – Fri, 37 hours pw. Strong excel skills, confident using Outlook/ Word. **Full details and apply via Hales Jobs website**

Patient Care Navigators – Rosedale Surgery, Lowestoft, £11.44–£11.75 PH. Taking calls, duties as required, supporting clinical staff. **Full details and apply via Indeed**

Kitchen Assistant – Kingsley Healthcare, Lowestoft, £12 P/H, part time. Competitive pay, welcome bonus, DBS required (cost covered by employer). Previous experience in a similar role is desirable but not essential. **Full details and apply via Find a Job ref 2453**

Catering Assistant - Elior UK, Lowestoft, £11.44 P/H, Mon - Fri, 15 hours P/W, term time only. DBS required. Experience desirable but not essential. **Full details and apply via Find a Job**

Ipswich

Healthcare Administrator – NewMedica

40 hours over 5 days – including weekend rota.

This role involves carrying out different administrative duties and it's a varied role – you could be booking patients into their appointments, making and answering phone calls, sending and replying to emails, managing the post and sending letters or dealing with enquiries. Our clinics are busy so we're looking for someone who loves working in a fast-paced environment.

Summer Field Work

This is an exciting role working in the great outdoors that provides stability and flexibility to suit your lifestyle. You will be part of a dedicated specialist team, with the opportunity to add new skills and meet great people along the way. We require full-time and part-time staff from now until the end of the year for a variety of tasks including field walking, sheeting, seed processing and tractor driving. No experience is necessary as full training will be given. Transport may be available depending on where you live.

Relief Accommodation Project Worker - YMCA

To deliver a high quality accommodation and support service to residents that reflects the highest standards of care and professional expertise. To support residents to develop independent living skills that facilitates their successful move on to more independent accommodation.

Care Giver – Right at Home

By becoming a CareGiver, you are not only supporting people to live a happier and fulfilled life, you will also become an integral part of ensuring their families can have peace of mind knowing that their loved one is in the best hands.

No experience required as a full induction and ongoing training will be provided.

Personal Assistant - Suffolk Independent Living

Caring, fun and energetic Personal Assistant required to support a very cheeky 19-year-old young man to go out to various activities and work on his life skills and independence.

£13.00 per hour, 20 hours per week, 3 days a week.

Must be a driver with own car and an enhanced DBS check is required for this position.

Domestic Warehouse Cleaner – Amazon

Full-Time cleaners 6am to 2pm Days, 2pm to 10pm Afternoons, 10pm to 6am Nights Rota - 4 on & 4 off.

You will be working within a warehouse environment with our cleaning team. You will use appropriate cleaning equipment, materials, and chemicals (we will provide full training for you), and ensuring that all equipment is kept clean, well maintained and in safe working order.

Cleaner - Tesco

Sunday to Friday (six days a week) 20 hours, 5 am start, £11.67 per hour.

Work based in Tesco Extra Martlesham.

The right candidate will be happy to work as a part of the team as well as independently. They will be responsible for cleaning various areas of the shop, including car park and delivery vans.

Groundworkers, Labourers & Plant Operators – Howard Construction

Due to continued growth we are currently recruiting for Skilled & Semi-skilled Groundworkers.

These roles offer long-term opportunities, lasting 4 years or more, at various sites in Suffolk

Applicants ideally must hold a C.S.C.S card.

Drivers preferred to be able to get to sites but lift shares may be available depending on location.

Customer Service Advisors – Drax

Do you have excellent communication skills, able to build relationships and are a team player?

Drax has 5 Customer service Advisor roles, you will be managing corporate accounts over the phone so you will need to be to an excellent communicator.

Assessment day taking place on Friday 13th September.

IP Express Cabs – Licensed Taxi Drivers and Passenger Assistants

We are currently looking to recruit both licensed taxi drivers based in the Ipswich borough and Passenger Assistants.

The work involves school contracts directly from Suffolk County Council.

Drivers will be required to have a full DBS check and will need to complete a safeguarding test.

Nudge Education

We are looking for compassionate and innovative Practitioners who are passionate about inclusion and can create a safe environment to inspire young people to see the value in education again.

The key to what we do is focused upon creating a strong connection with our young people. We need people who don't give up at the first hurdle; those who can think and deliver with inventive imagination

Baker – Bakers + Baristas

Bakers + Baristas are seeking a Baker to work full time in their Ipswich location. You must be able to work on weekends and be flexible when needed. Prior experience is preferred but they're ideally looking for a willing and capable individual who is comfortable in the kitchen environment.

The role is advertised at £26,000 per year and is a permanent position. Please ask your work coach if you would like to be put forward for the role.

Customer Assistant – LIDL

£12.40 - £13.00 per hour | 20 hour contract | 30-35 days' holiday (pro rata) | 10% in-store discount | Pension scheme.

From restocking shelves to jumping on tills, you'll keep moving, keep business booming and never be bored. You'll take pride in going the extra mile to keep the store clean, tidy and organised, working closely with your colleagues and making sure that every customer receives the service they deserve

Security Officer – Guarding UK

Calling all SIA and CCTV holders! Guarding UK are seeking a Security Officer to work in Ipswich for 38hrs per week at Ipswich Butter Market IP1 1DT. The permanent role requires an up to date SIA and CCTV licence.

You will also need to have experience of using Microsoft packages to complete necessary daily documentation and reporting as part of your role.

Event Steward - Phoenix Events

You will be expected to be smart, presentable, and approachable at all times. Your job is to support the smooth running of the event, no two events are the same and you may be required to have a customer facing role or a supporting role. You will provide excellent customer service, upholding the reputation of Phoenix Events (East) Ltd. You must be able to obtain a DBS to be eligible for the role.

Tennial Personnel Recruitment

Tennial Personnel Recruitment are looking for staff to fill a range of roles including Recycle Operatives, Assembly Technicians, Line Operatives and Factory/Farm Workers.

If you're interested, please let us know.

Handballers – Wincanton

We are looking for a number of Handballers to join the friendly team at a new site in Sproughton, Ipswich. The successful candidates will unload containers and lorries. This is a physical demanding role which will require an element of physical fitness to adapt to this type of work.

Working rotational shifts Monday to Friday of 6am - 2pm and 2pm – 10pm with the option to work Saturdays as required.

The Best Connection – role in Great Blakenham - FLT Operative

Local company requires FLT Counter-balance drivers with a valid licence.

You will be required to move pallets of stock around in the warehouse, as well as any other warehouse duties. Physical work will be involved. Temp to perm job only. Our client offers: -
Monday to Friday (Nights), 1700-0330.

For further information and how to apply, please contact your Work Coach or email your CV to ipswich.eainbox@dwp.gov.uk stating which role you are interested in.



Bury St Edmunds

Assembly Operative

Contract Type: Temporary to Permanent

Start Date: ASAP

Pay Rate: £11.44 - 13.00 per hour dependant on experience.

Location: Bury St Edmunds

Are you a skilled and detail-oriented individual with a knack for assembling products? Are you proficient in following instructions and attention to detail? If so, we have an exciting opportunity that you won't want to miss!

[Jobs in Bury St Edmunds, Suffolk | Assembly Operative - Bury St Edmunds, Temp to Perm £11.44, Manufacturing and Production | Adecco UK](#)

Support Worker

Be part of making lives better as a Support Worker at The Chimneys in Bury St Edmunds and experience what delivering great healthcare should feel like.

The shift pattern is 12.5 hours a day, 3-4 days a week including nights and weekends.

Location: New Rd, Rougham, Bury St Edmunds, Bury Saint Edmunds IP30 9LR

Annual salary of up to £25,756

[Support Worker - Elysium Healthcare](#)

Multi Drop - Delivery Driver (Night Shift)

Hours: 2200 to 0730 (Yep, you read that right)

You'll be working: Sunday, Monday, Wednesday, Thursday

Put your feet up: Tuesday, Friday and Saturday

Location: Bury St Edmunds - IP32

Permanent contract

Annual Salary: £27,924 (Working 4 nights per week)

[McQueens Dairies hiring Night Shift Delivery Driver - Bury St Edmunds in Bury St Edmunds, England, United Kingdom | LinkedIn](#)

Cleaner

Equans is looking for a Part time Afternoon Cleaner to join our team in Triton House, St Edmunds, IP33 1TR, on a permanent basis working 10 hours per week. On offer is a salary of £11.44 per hour and benefits package.

Shift Pattern: Monday to Friday 16.00-18.00

[Part Time Afternoon Cleaner | Equans](#)

Labourer

Labourers required in Bury St Edmunds starting Monday 23.9.24. Must have CSCS full PPE and references backing up site experience. To Apply please call Cygnet Sourcing Ltd on 07702081025

Job Type: Full-time

Pay: £15.00 per hour

Expected hours: 40 per week

Experience:

- Construction: 1 year (required)

[General Labourer - Bury St. Edmunds - Indeed.com](#)

Store Assistant

Aldi

£12.40 - £13.35 per hour

Permanent

Bury St. Edmunds

[Store Assistant in Bury St. Edmunds - Aldi Recruitment GB](#)

Barista

Here at Costa Coffee, we want to inspire the world to love great coffee. We're all about embracing passion, energy, and teamwork to serve memorable moments for every one of our customers. As a Costa Barista, you'll not only enjoy the pride of working for the nation's favourite coffee shop, but you'll also receive great training and benefits. So, you're sure to enjoy Costa Coffee as much as our customers do.

A bit about the role

Starting pay of **£12.00-13.00** per hour (dependent on the location of the store)

Day to day, you'll be making coffee that provides uplifting moments for our customers. That means sustainably sourced beans and velvety milk coffee, topped with our signature art, and delivered with your signature smile.

[Barista Maestro | Costa Careers](#)



Relax, renew and revive while raising funds for Suffolk Mind

Suffolk Mind is hosting a Fashion & Wellness Shopping Event in Woodbridge this October. There will be a variety of stalls available including:

- [Dot & Do Dah](#)
- [The Handmade Magpie](#)
- [Melanie Davies Mind Solutions](#)
 - [AccessiSew](#)
 - [Life in Balance](#)
 - [Labyrinth of Nurture](#)
 - [Tranquillity Therapies](#)
- [Jenna's Beautiful Books – In Partnership with Usborne](#)
 - [Seaminglyhandmade4you](#)
 - [Drops of Wilde Rain](#)
 - [Holistic Treatments](#)
 - [Kirkside Crafts](#)
- [Spie Jewels Gifts & Accessories](#)
 - [TEMPLESPA](#)
 - [Apothekelly Skincare](#)
 -

The event will be hosted at Sports Dome, Woodbridge School on Saturday 19 October, from 10am – 2pm and is free to attend for shoppers/visitors, although we invite all visitors to make a small donation at the door to support our vital work.

[Fashion & Wellness Shopping Event - Suffolk Mind](#)



Mini yoga retreats

Mini yoga retreats Purpose built air conditioned and heated studio in Risby.

Join us for a wonderful Healing Day of Yoga, Healing Meditations and Guided Relaxations, A beautiful Vegan Lunch inspired by Deliciously Ella, plus afternoon Refreshments and Tasty Treats. Finished off by a Sound Healing Gong Bath to soothe and heal your Soul, brought to us by Tracy at Sacred Sounds.

£65 per person, booking essential

[Healing Yoga Retreats | Lizzies Yoga](#)



Friday, October 18th · 10 - 11am

Saxmundham Library

Street Farm Road Saxmundham IP17 1AL

Event lasts 1 hour

Working in collaboration Wellbeing Suffolk and Suffolk Libraries are running a special Face 2 Face Friends session. You will become a Wellbeing Friend and learn all about the support on offer at Suffolk Libraries for your Health and Wellbeing.

Becoming a Friend of Wellbeing gives you the knowledge to recognise when someone is struggling and point them in the right direction. The session is free.

What you'll gain;

- Wellbeing Friend Certificate and a badge
- Access to our Wellbeing Friends Facebook group
 - Bi-yearly Newsletters
 - A role to add to your CV
- A way to show friends, colleagues and customers alike that you care about their wellbeing.

Other venues

Fri, Oct 4, 11:30 AM

Haverhill Library • Haverhill

Free

Wellbeing Suffolk

Tue, Oct 29, 1:30 PM

Stowmarket Library • Stowmarket

Free

Wellbeing Suffolk

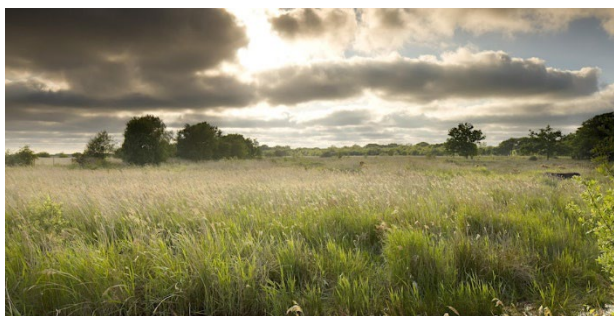
Thu, Nov 14, 12:30 PM

Felixstowe Library • Felixstowe

Free

Wellbeing Suffolk





Ramble to the roost

Starts on Sun, 1 Dec 2024 14:00

Hickling Visitor Centre

Stubb Road Hickling NR12 0BW

About this event

Join our guide at the visitor centre for a ramble to our raptor roost watch point. We'll be looking out for some of NWT Hickling Broad's key species along the way as well as spending time at the watch point counting the marsh harriers and crane, as they come in to roost. Barn Owl, and pink footed geese are some of the other species we should get to see. Walking distance is approximately 1.5 miles over (sometimes muddy) uneven ground, please wear sturdy footwear. It's very exposed to weather at the watch point so warm clothing, binoculars and a torch are highly recommended.

Additional adult reserve entry fee for non-members - £5.00 gift aid / £4.50 standard entry payable on arrival at the visitor centre. NWT Members / Children 16 and under - free entry.

Accessibility

Please contact us at events@norfolkwildlifetrust.org.uk if you have any specific needs or requirements in order to make your experience of this event more enjoyable.

Organised by

Norfolk Wildlife Trust

[Ramble to the roost Tickets, Sun 1 Dec 2024 at 14:00 | Eventbrite](#)



Weekend Sat 5 – Sun 6 October

Weekend Sat 12 – Sun 13 October

Weekend Sat 19 – Sun 20 October

Daily Sat 26 – Thurs 31 October

9am – 5pm

Rougham Sunflower and Pumpkin Field, Just north of Junction 45 of the A14,

3 miles east of Bury St Edmunds

Pricing:

Free admission and parking

No booking needed

Pumpkins and gourds priced according to size